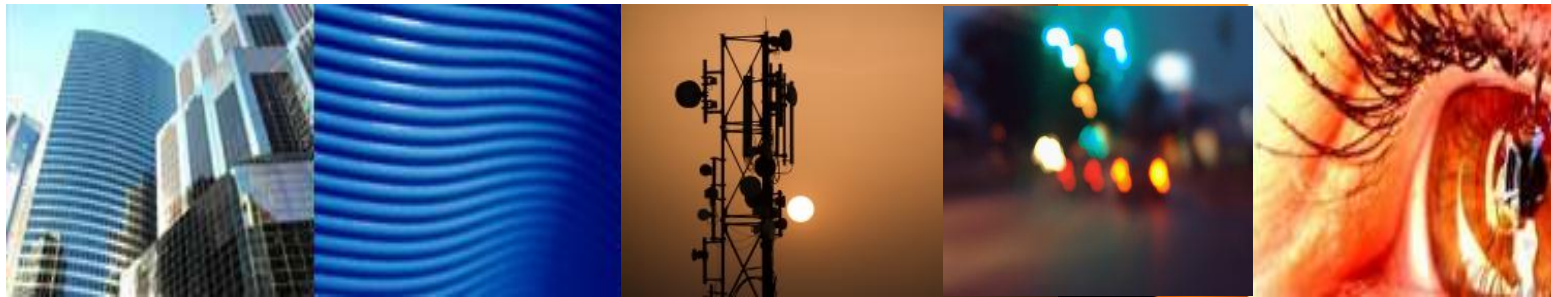
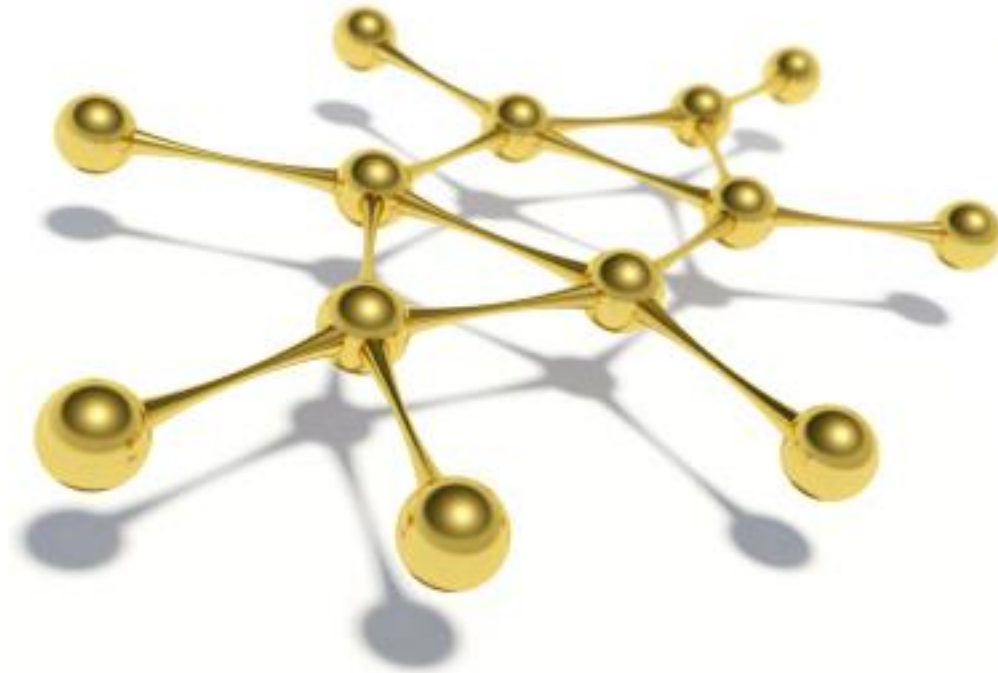


professional **TELECOM** solutions



Corporate Presentation – Jun 2016

Network Designers (Hardware, Firmware, Software)



ALBEDO Telecom is a manufacturer of instruments and systems. We provide wireless and wireline telecom industry tools to install, troubleshoot, emulate and maintain those infrastructures that support next generation applications. ALBEDO core expertise range from PTP, SyncE, 10GbE, GbE, T1, E1, TDM, Jitter/Wander, QoS, and VoIP technologies that we have implemented on WAN Emulators, mobile Taps, mobile Sniffers, hand-held Testers, and Monitoring Systems.

about us...

1983...



...2016

- **1983**: World first PCM analyser with microprocessor
- **1989**: First portable multiplexer 64 kbit/s to 140 Mbit/s
- **1991**: OEM to HP and Agilent
- **1996**: First hand-held device incorporating a touch-screen
- **1999**: World first hand-held tester for SONET/SDH
- **2009**: World first portable wirespeed tap with active filters
- **2012**: World first handy wirespeed WAN emulator
- **2014**: World smallest 10Gb/s Ethernet, PTP, SyncE tester
- **2015**: PTP synchronization assurance
- **2016**: Hold-over with built-in Atomic Rubidium Clocks





AT.OTDR new and compact instrument that includes **OTDR**, **VFL**, **Power Meter** and **Light Source** will speed up the installation and maintenance of the fiber optic plant (used in long haul, metropolitan and access networks) by means of a complete set of tools and measurements. Designed for field engineers willing to certify the performance of optic links or troubleshooting the optical layer have now this rugged, light and reliable.

AT.OTDR [reliable OTDR]



Metro.ISO and Metro.ISO-M1 are a next generation **Insulation Measuring** instrument designed and manufactured in Europe with the last technology available in 2016. It can test **Insulation-Resistance**, **Capacitance**, **AC / DC Voltage**, **Cable test**, Selectable measuring lead pairs.

Metro.ISO is a modern and well prepared instrument for engineers working in electrical and telecom installations, at factory, the central office or the field.

Metro.ISO is compliant with **IEC61010 CATIII 600V**

METRO.ISO
[multimeter]





ALBEDO Telecom is a [global supplier](#) of customized laboratories capable to execute [interoperability test suites](#) to ensure the continuity – and growth – of telecom equipment based on LTE, [VoIP](#), [IPTV](#), [C-Ethernet](#), [Synchronization](#). Test results make it easy your organization to decide if the products meet your [business requirements](#), and if they do, you can use our test reports to make sure that the equipment gets seamlessly integrated into [your network](#).

[PTP / SyncE / GbE / VoIP / IPTV](#)
[\[interoperability labs\]](#)



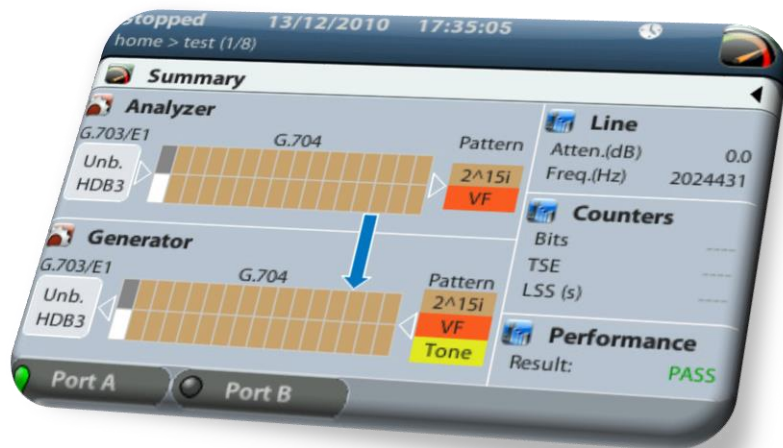
VoIP.Master delivers installation, maintenance and service assurance tools for VoIP and Unified Communications. Designed to meet the needs of VoIP technicians. With a powerful feature set VoIP.Master provides a comprehensive test capability required for next generation voice environments. Users can for example connect [VoIP.Master to SIP trunks](#) and VoIP networks emulating an IPBX, making multiple VoIP calls ensuring the trunk is operational and performing to pre-agreed SLA. VoIP.Master can also emulate a SIP VoIP network allowing VoIP equipment to be tested without the need for an operational SIP trunk or network, ideal to verify SIP VoIP Network and SIP VoIP Equipment the prior to deployment by means of emulation modes as standard. VoIP.Master also has the ability to emulate up to five [T.38 fax machines](#).

[VoIP.Master \[service turn-up\]](#)



AT.One is the ultimate tester designed specifically for field engineers that are installing, commissioning and troubleshooting **T1, E1 and Datacom circuits**. AT-One has been designed and manufactured by ALBEDO Telecom in a brand new platform that incorporates the latest available electronics. Consequently you will enjoy top performance, **high accuracy** and first class quality this is why we can offer three years of full warranty.

AT.ONE [the world in a hand]



The AT-2048 is the ultimate E1 tester just designed for field engineers that are installing, commissioning and trouble-shooting E1, Wander, Pulse Mask, and Datacom circuits.

The AT-2048 analyzer is a rugged hand set, equipped with a full color GUI, designed for field use in the analysis and maintenance of telecom circuits. You may need to test framed, unframed, signaling, drop and insert Nx64Kbps, data, and jitter into any time slot.

[AT-2048 \[e1 tester\]](#)

NetStorm emulates unified networks including those perturbances typical of packet networks. The objective is to test applications, devices and protocols that should be tolerant with packet delay, jitter, loss, duplication, reordering, error and bandwidth variations.

NetStorm is a tool for developers debugging new IP equipment, acceptance test laboratories, design and configuration of unified Ethernet/IP networks, QoS/QoE test, HDTV, IPTV, VoIP, PTP flows, Video Streaming, VPN data, High Speed Internet, Satellite and Undersea traffic applications. All of them may suffer the network conditions found on the Internet and enterprise.



NET.STORM [wan emulator]



Net.Shark is an **FPGA tap** that improves Wireshark performance by means of **hardware programmable filters**. It can capture packets at wire-speed (2 x GbE) something that Wireshark CPUs can't do **without delaying the stream**. Powerful and lightweight, allowing hours of continuous operation with batteries.

NET.SHARK [field tap]



Net.Hunter is the world first hand-held tool capable to capture ALL packets that are compliant with a trigger condition, or any of the 15 programmable filters. Caught packets -in full duplex GbE links- can be SAVED in local hard-disk or TAPED to a 1000BASE-T LAN. All the operations are executed at wirespeed without any delay or loss to the live traffic.

UNDETECTABLE : no MAC, no IP.

NET.HUNTER [mobile tap&capture]



Ether.Giga is an Ethernet & IP tester equipped with all the features of legacy testers such as BER and RFC2544, plus the new ones like eSAM, Y.1564, Y.1731, and FCS error insertion in pass mode therefore it is capable to verify the QoS and SLA of new Multiplay services offering field technicians tools to quickly and easily validate and troubleshoot Ethernet services, including multiplay applications such as VoIP, IPTV, VoD, high-performance Computing, Virtualization Services, Data Centers and Storage that require significant levels of bandwidth.

ETHER.GIGA [new age GbE tester]





Ether.Sync is a field *Synchronous* Gigabit Ethernet / IP tester, equipped with all the features to deploy and troubleshoot *SyncE* infrastructures, *PTP*, *Jitter and Wander*, that are added to standard Gigabit Ethernet features such as RFC 2544 and new test standards such as Y.1564 & Y.1731

ETHER.SYNC [syncE tester]



Ether.Genius is a field Gigabit Ethernet / IP tester and full equipped with all the features required for the installation, maintenance, and troubleshoot Synchronization, Ethernet and IP infrastructures and applications, optionally may include including SyncE , PTP features including Jitter & Wander test. It can be equipped with built-in GPS receiver or a **real Rubidium clock**.

Simultaneously this is an T1, E1, Datacom, and C37.94 circuits tester just designed for field engineers that are installing, commissioning and trouble-shooting telecom and power utilities networks.

ETHER.GENIUS [6-in-1 tester]



Ether10.Genius is a field 10 Gigabit [Ethernet tester](#), [double port](#), touch-screen, with all the features required for the installation, maintenance, and troubleshoot Ethernet and IP infrastructures and applications, optionally may include including [SyncE](#), [PTP](#) features including [Jitter & Wander](#) test.

Simultaneously this is an [E1 tester](#) just designed for field engineers that are installing, commissioning and troubleshooting [E1](#), [Wander](#), [Pulse Mask](#), [Datacom](#), and [C37.94](#) circuits

ETHER10.GENIUS [world' smallest]





Net.Sync is a rack mounted [synchronization appliance](#), configurable as [Grand-Master](#) or [Slave PTP clock](#), which is also capable of [monitoring the quality](#) of the provided timing services. Net.Sync is not only a comprehensive PTP clock because it is also equipped with functionalities to measure the [frequency and phase impairments](#) that are caused by the network elements including lasers, fiber optics, packet switches and routers. Moreover, it is able to verify the [transmission](#) layer used by the time stamped packets and [cooperate](#) with [remote instruments](#) executing standard test suites.

NET.SYNC [Synchronization Appliance]

Net.Time is a family of [PTP](#) and [SyncE](#) network clocks suitable to deploy timing services across 4G/ LTE, 3G, WiMax and GPON networks. There are three models GrandMaster, Boundary and Slave clocks playing different roles in order to distribute highly accurate signals to its clients including [frequency](#), [phase](#), [time-of-the-day](#) information. The most outstanding feature of Net.Time family is the capacity to [loop back testing](#) packet at the Ethernet network and to [monitor the quality](#) of the input reference clock including by means of counts, statistics and [TIE](#), [MTIE](#), [TDEV](#) results.

NET.TIME [network PTP clocks]



That's all



www.albedotelecom.com



ALBEDO
Telecom

the Path to Excellence